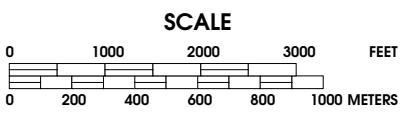


CITY OF GREAT BEND

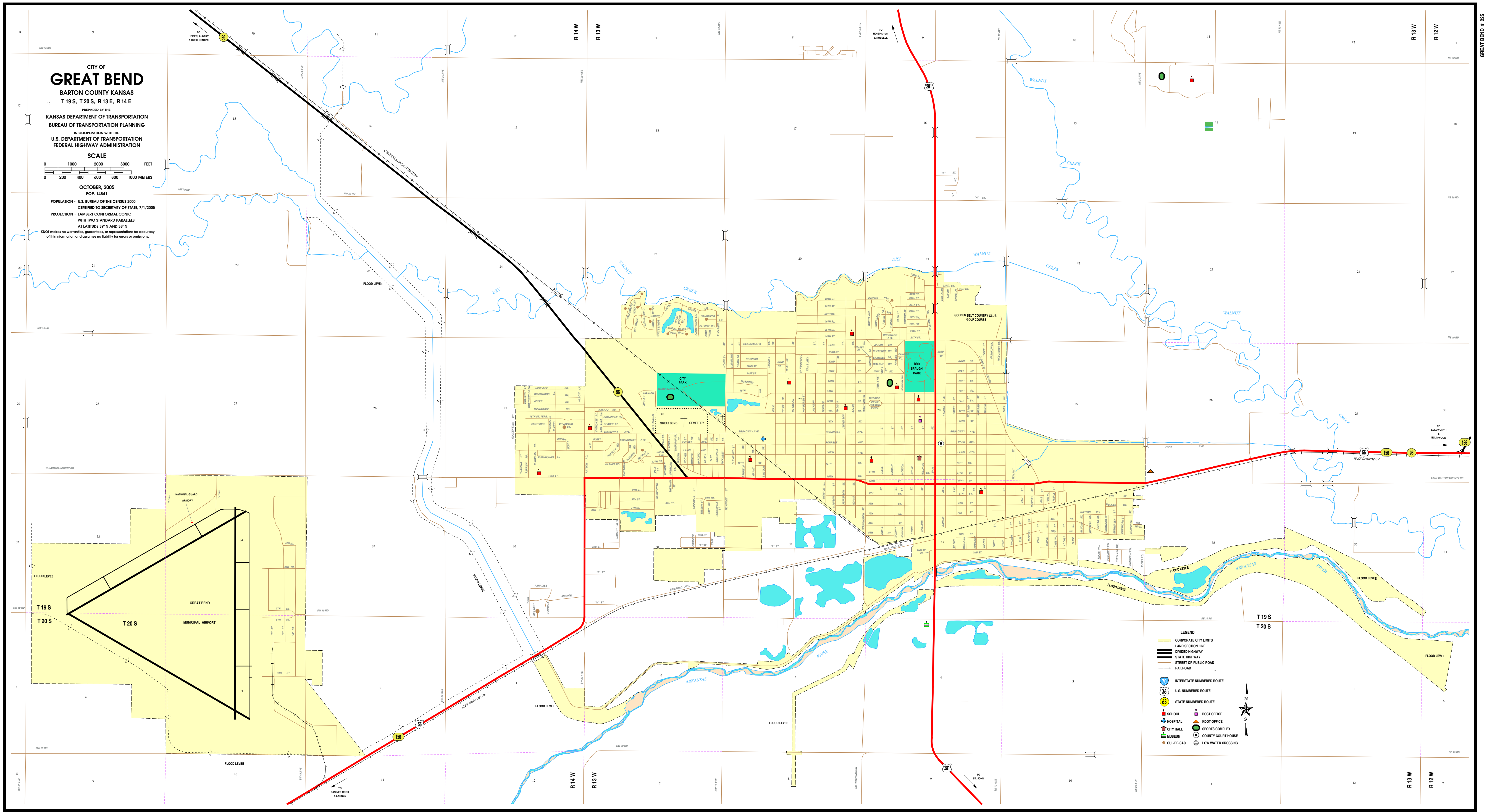
BARTON COUNTY KANSAS
T 19 S, T 20 S, R 13 E, R 14 E

PREPARED BY THE
KANSAS DEPARTMENT OF TRANSPORTATION
BUREAU OF TRANSPORTATION PLANNING
IN COOPERATION WITH THE
U.S. DEPARTMENT OF TRANSPORTATION
FEDERAL HIGHWAY ADMINISTRATION



OCTOBER, 2005
POP. 14,841
POPULATION - U.S. BUREAU OF THE CENSUS 2000
CERTIFIED TO SECRETARY OF STATE, 7/1/2005
PROJECTION - LAMBERT CONFORMAL CONIC
WITH TWO STANDARD PARALLELS
AT LATITUDE 37° N AND 38° N

KDOT makes no warranties, guarantees, or representations for accuracy of this information and assumes no liability for errors or omissions.



- LEGEND
- CORPORATE CITY LIMITS
 - LAND SECTION LINE
 - DIVISION HIGHWAY
 - STATE HIGHWAY
 - STREET OR PUBLIC ROAD
 - RAILROAD
 - INTERSTATE NUMBERED ROUTE
 - U.S. NUMBERED ROUTE
 - STATE NUMBERED ROUTE
 - SCHOOL
 - HOSPITAL
 - CITY HALL
 - MUSEUM
 - CUL-DE-SAC
 - POST OFFICE
 - KDOT OFFICE
 - SPORTS COMPLEX
 - COUNTY COURTHOUSE
 - LOW WATER CROSSING

